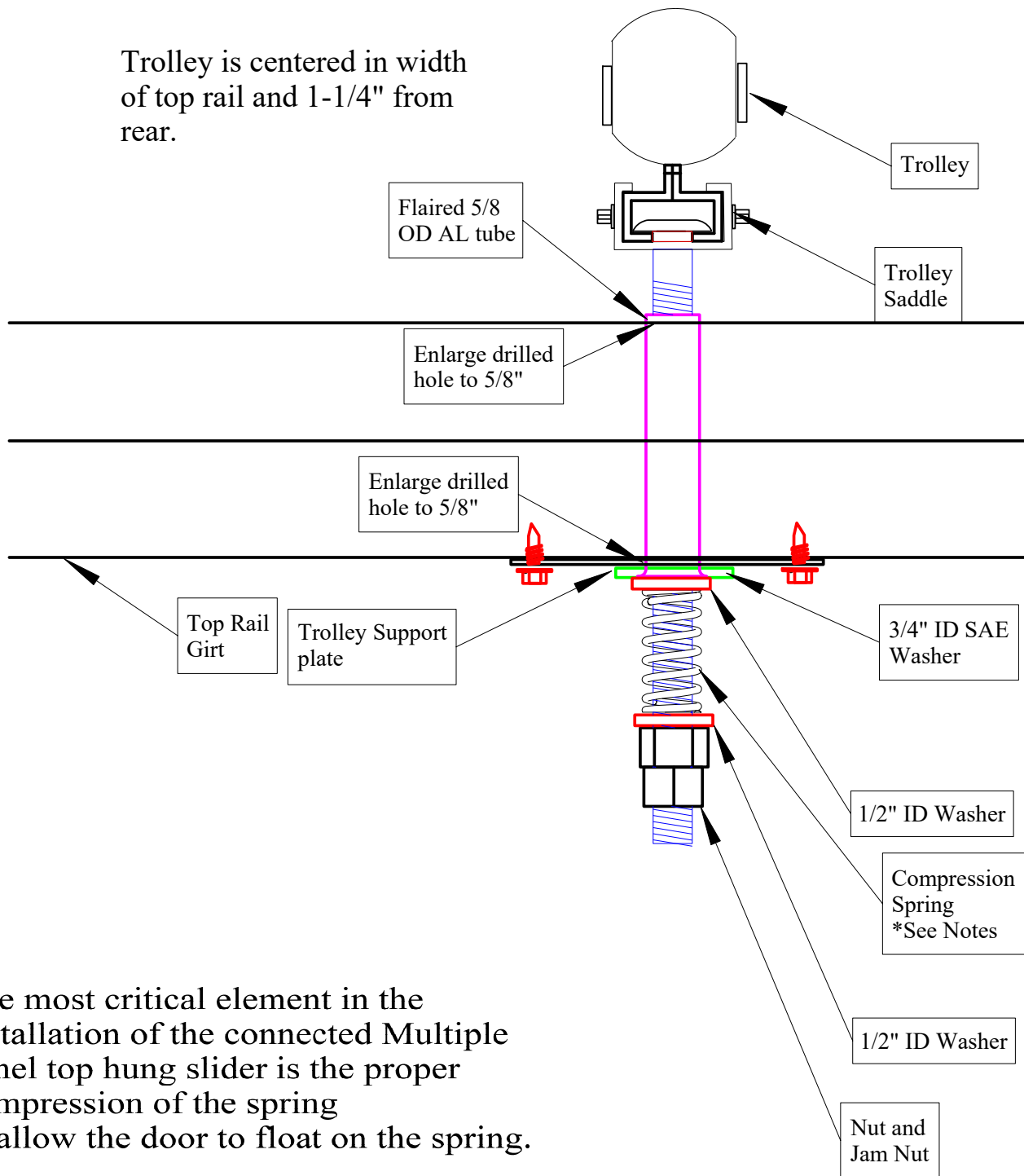


# Fold Tite Top Hung Slider Trolley Spring installation

Trolley is centered in width of top rail and 1-1/4" from rear.



The most critical element in the installation of the connected Multiple panel top hung slider is the proper compression of the spring to allow the door to float on the spring.

Springs are now supplied based on the average weight of the door panels. the trolley nuts are to be adjusted to position the door top rail at approximately 1" below the track When this adjustment is completed, the compression springs must not be fully compressed.