



FoldTite Systems
now
Manufactures and
Sells
Cool-Air Doors
And
Manual Hangar Doors

FoldTite Systems, Inc.
Po Box 2283
Malta, NY 12020
Toll Free 866-580-8980 International 518-580-8980
FAX-518-691-8347—www.FoldTite.com

© 2015 FoldTite Systems, Inc.



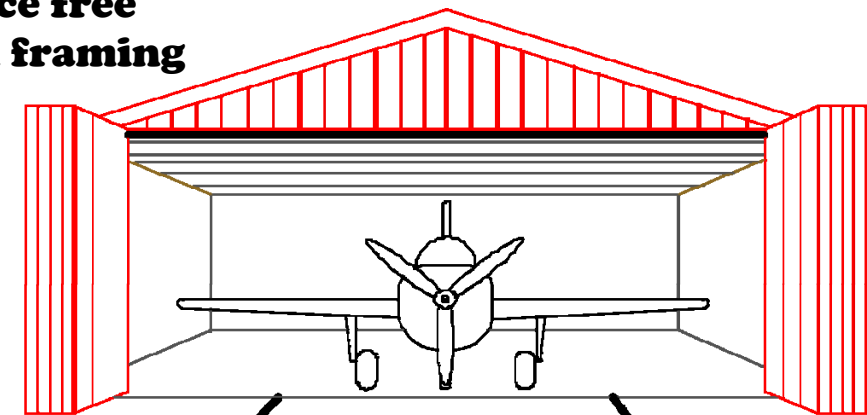
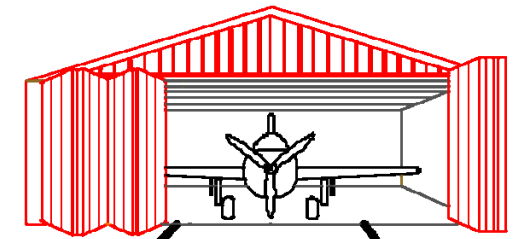
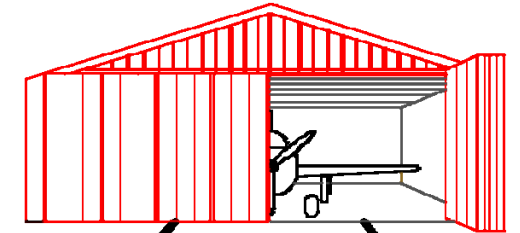
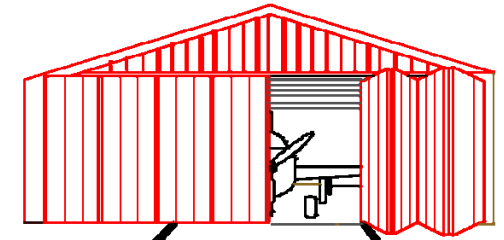
CSA-5.0 FT CSA-5.0 Plus Fold-Tite Stacker Folding Door System

**Large Door and
High Wind Loads**

**Easy Moving Tightly
Folding Manual
Operation**

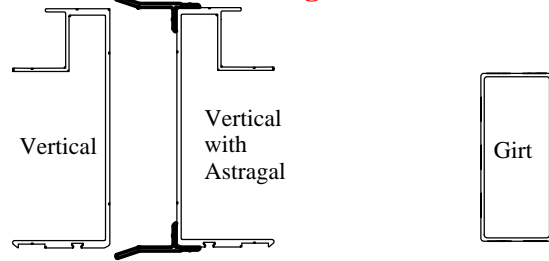
**Operate with out
Electoral Power**

**High quality
Maintenance free
Aluminum framing**

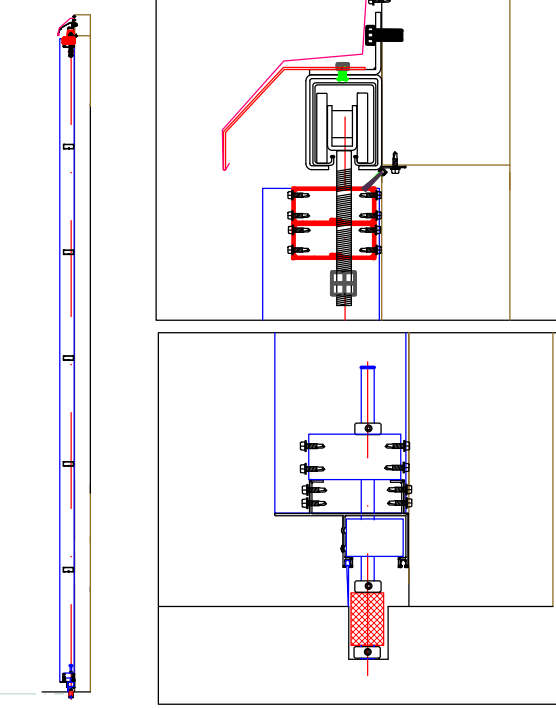
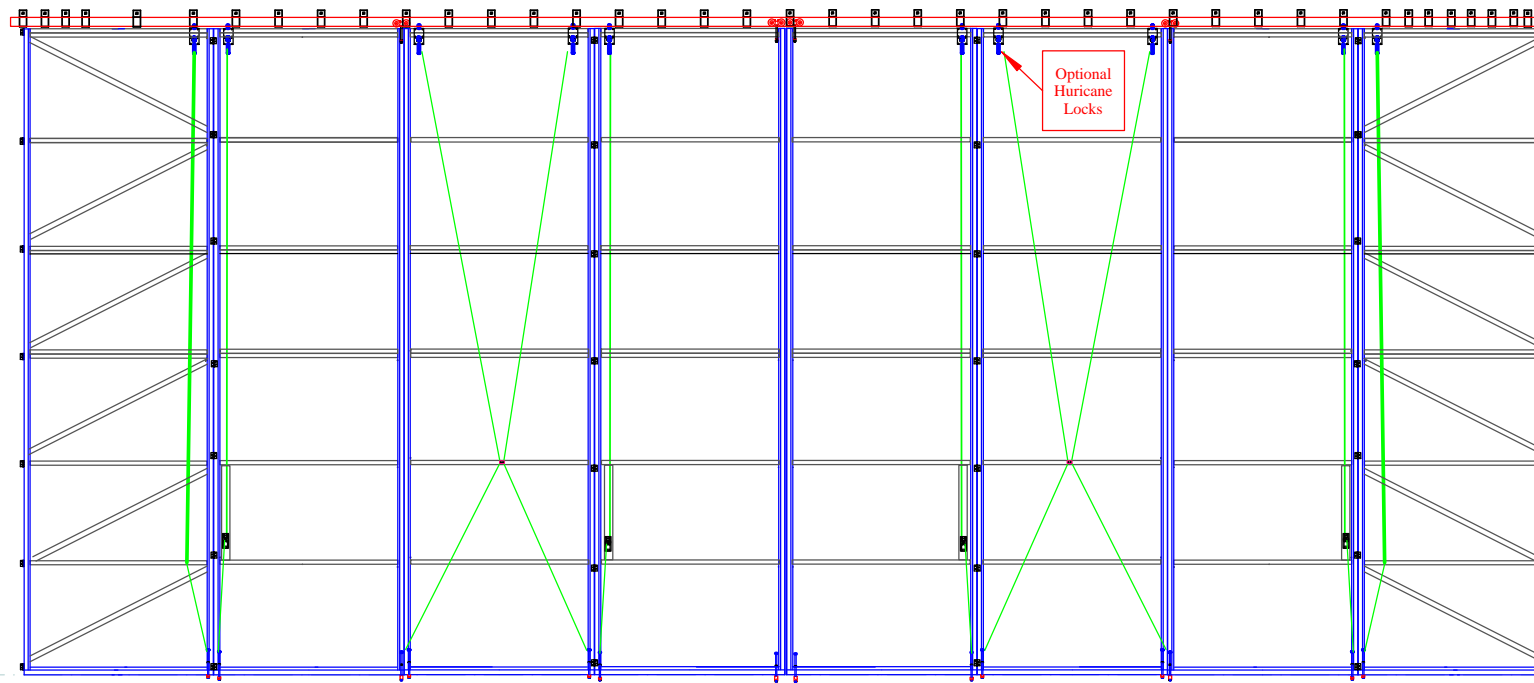
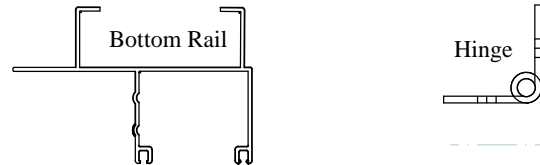


CSA-5.0 and CSA-5.0 PLUS designed for larger doors and higher wind load requirements!

Heavier Extrusions mean Stronger Doors

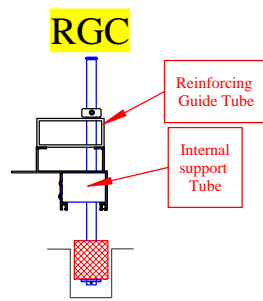


Extruded Components of the CSA-5.0 system have thicker walls than the standard CSA-2.5 for a stronger door with higher wind load capacity. Standard Girt is laid flat for a considerable strength gain and is used for the diagonal brace.

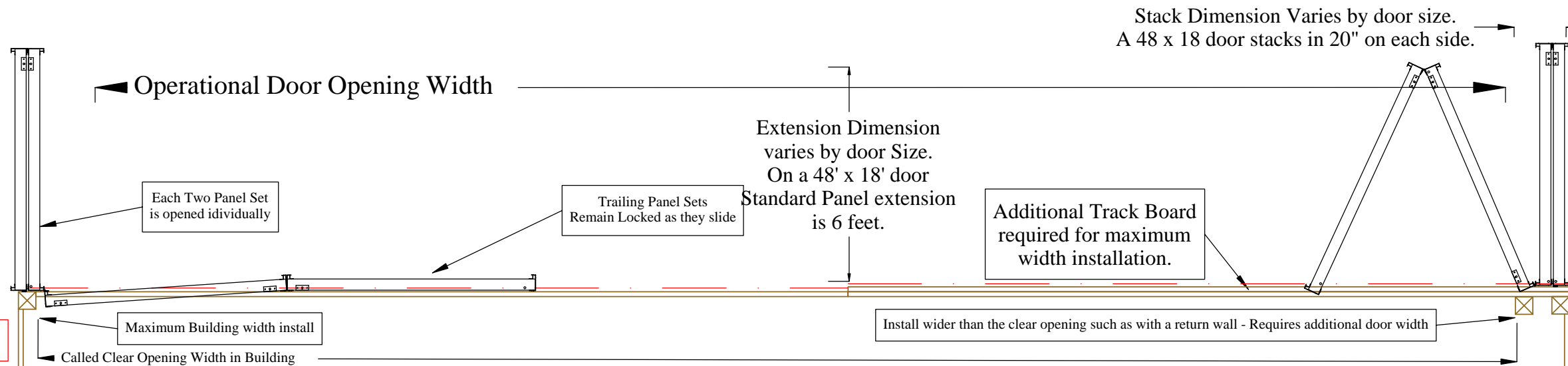


Typical 48' x 18' Door Frame Shown Wider Panels Reduce Stack Dimension and Increase Usable Width

Bottom Guide System for the CSA-5 PLUS is required to be the Recessed guide channel in the concrete. For the CSA-5.0 standard system either the CSR or RGC system is available... Both systems secure the door when closed and while moving. The concealed stay rollers may be removed after the door is open if desirable. High wind loads require the RGC System.



Bottom Rail with Bottom Roller in Recessed Guide Channel. Channel is formed in concrete requires no metal insert to rust



Standard panel quantity and total stack dimension is listed in the below chart. There is flexibility in the door design and changes necessary to meet specific site dimensions or preferences will be accommodated.

Size	CSA -5.0 - Std Panel 40"			CSA -5.0 PLUS		
	Panels	Excess panel	Operational opening	Panels	Std panel Width	Operational opening
32 Wide	10	30"	28'8"	6	5'3.6"	30'4"
40 Wide	12	38"	35'9.5"	8	4'11.6"	37'5.7"
48 Wide	14	45"	42'11"	8	5'11.7"	45'5.7"
54 Wide	16	41"	48'	10	5'4.5"	50'7"
62 Wide	18	44"	55'2"	10	6'2"	58'7"
68 Wide	20	44"	60'4"	12	5'7"	63'8.5"
80 Wide	22	46"	67'6"	14	5'8"	74'10"

Seals Standard: Top seal is a 1" brush with aluminum holder, bottom seal is a 1.5" Vinyl fitted into the bottom rail, adhesive foam seals supplied for joint between panels, a double astragal is supplied to seal the center of the door. Bottom brush seal optional.

Door Support and Smooth Operation are provided by the overhead Track System.

Standard track and roller bearing trolley support 500# per pair and brackets are spaced 24" on center and 6" on center in the stack area.

Heavy duty 13 gauge track and 3" roller bearing trolley support 1000# per pair and brackets are spaced 18" on center and 9" on center in the stack area. Used with CSA-5.0 Plus on very Large doors.